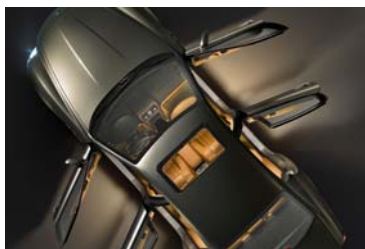




FERRARI
MASERATI
OF SEATTLE



Quattroporte



Overview

The majestic new Pininfarina-styled Maserati Quattroporte is a curvaceous yet aggressive-looking, big, five-metre long saloon that hails the rebirth of the "Italian flagship car". The Quattroporte is the ultimate embodiment of qualities for which Italy is renowned throughout the world: an appreciation of beauty and good living, elegance, sophisticated engineering, genuinely sporty temperament and alluring exclusivity.



Performance

Top speed 165 mph
0-60 mph 5.1 s



Engine

Engine 8 cylinders in 90° V
Bore & stroke 92x79.8 mm
Total displacement 4244 cc
Compression ratio 11:1
Maximum power 400 hp
Maximum torque 333 lbs./ft

For more information visit www.maserati.com

206.329.7070

1401 12th Avenue, Seattle, WA 98122

www.ferrariofseattle.com